

## Coronavirus Disease - COVID 19

Weekly Situation Report No. 36 (16 October 2020)

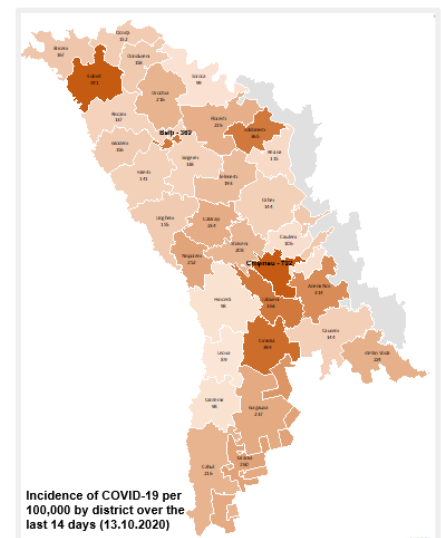


*This report is produced by UN Moldova in collaboration with Government and development/humanitarian partners. From 18 September 2020 programme updates will be produced at the end of the month. All past sitreps can be accessed [here](#)*

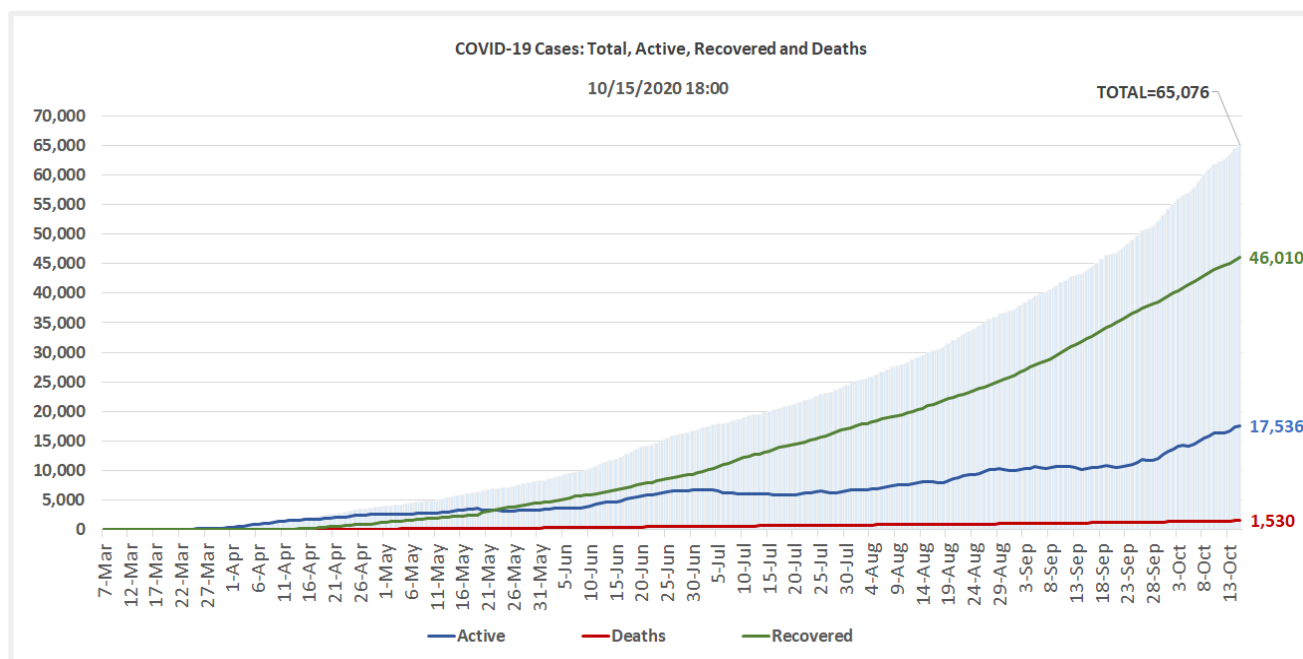
## Highlights – data as reported by national authorities

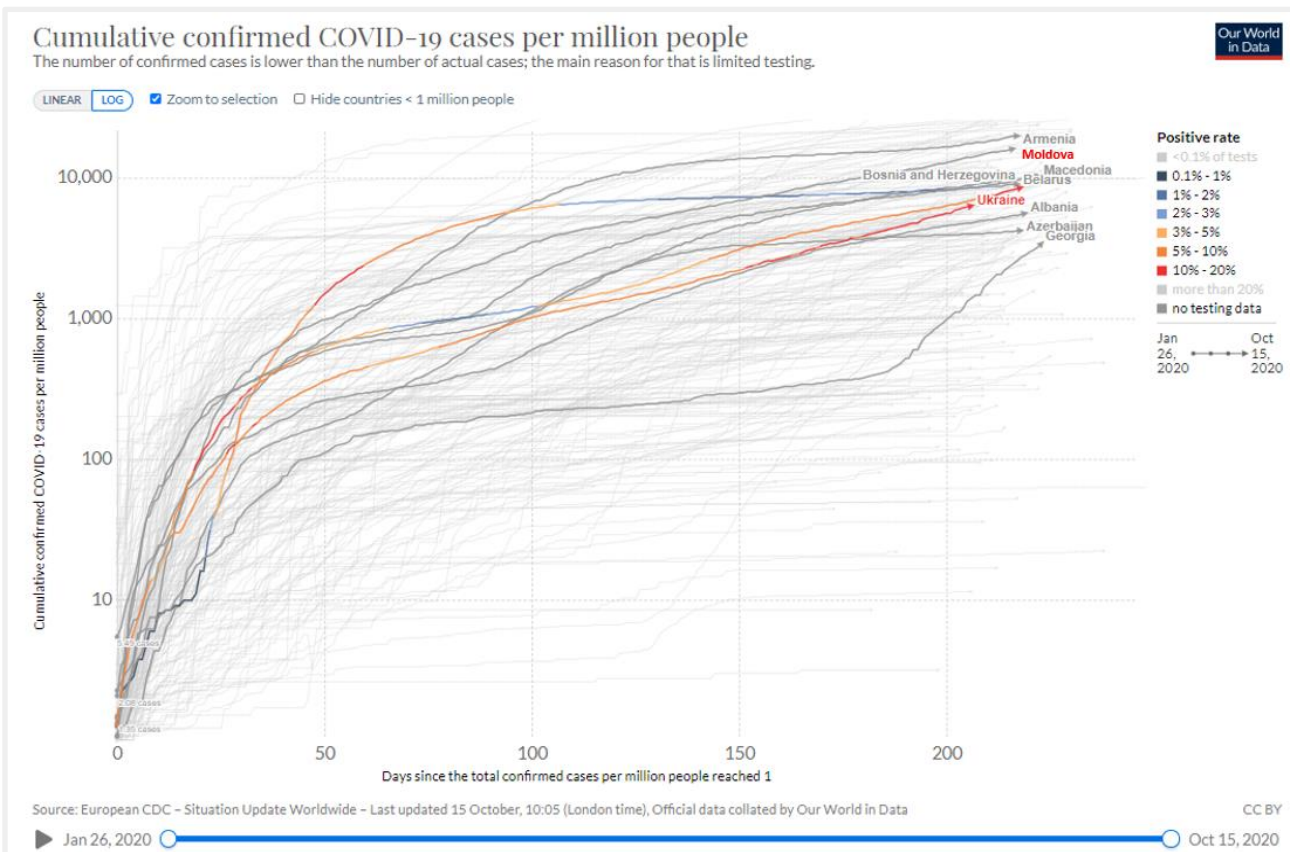
Data as at 15/10/2020, 18:00 p.m.

- The number of cases continued to grow but somewhat slower than in the past few weeks. However, a new record number of daily cases - 1,149 - was established on Wednesday of this week. The average number of daily cases over a seven-day period now stands at 737, which is about 100 cases less compared to the same figure last week. The total number of reported cases currently stands at 65,076. The total number of active cases increased to 17,536, which represents 26.9% of all registered cases;
- The overall crude cumulative incidence of cases per 100,000 stands at 1,873, which continues to place Moldova near the top of countries with some of the highest incidence of cases in Europe and in the region. The crude cumulative incidence of cases over the last seven days is 149 and over the last 14 days is 317, with the former figure registering a decreased and the latter remaining at the same level over the past week;
- The number of deaths continued to grow at an increasing rate, with a total of 106 deaths being reported over the last seven days. The average number of daily deaths over the same period is 15.14, which is higher than the 12.57 figure registered last week. The total number of deaths reached 1,530. The case fatality rate, at the same time, remained stable at 2.4%. The average age of patients who have died from the disease is 66.4, with over 90% of all deaths having been reported in patients 50 years of age and older;
- The number of patients who have recovered from the disease now stands at 46,010. This represents 70.7% of all cases;
- Weekly figures reflect a relatively stable situation in terms of the number of confirmed cases and recoveries. The total number of new cases registered last week is 5,572, which represents a 2.3% decrease compared to the previous week. The contagion rate (R0) also decreased to 1.1 last week and continued to decrease further this week. The figure now stands at 1.07;
- The total number of recoveries last week was 3,402, which represents a 9.3% increase compared to the week prior. The gap between new cases and recoveries decreased somewhat last week but at 2,170 cases continues to remain significant;

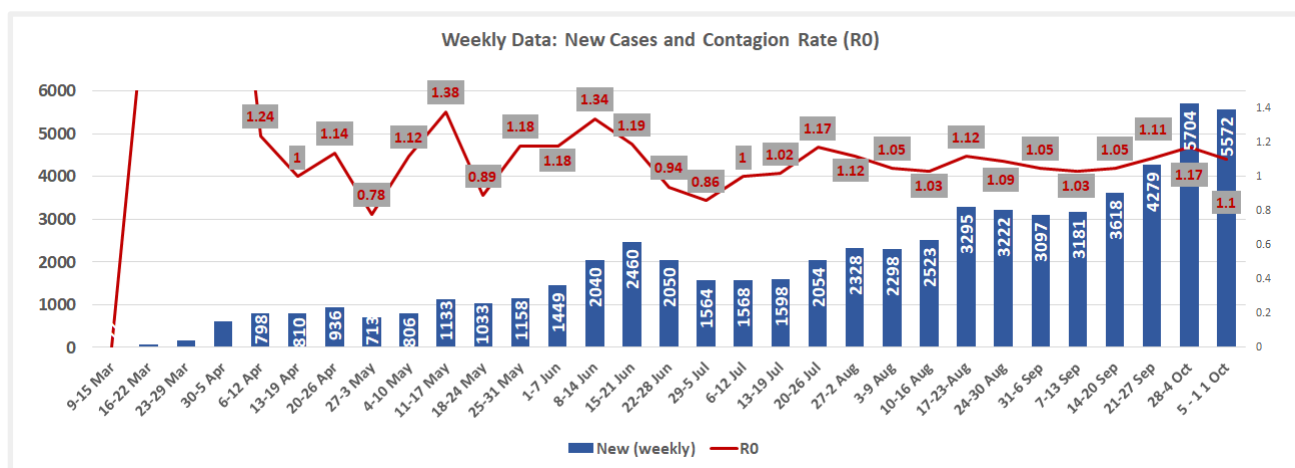
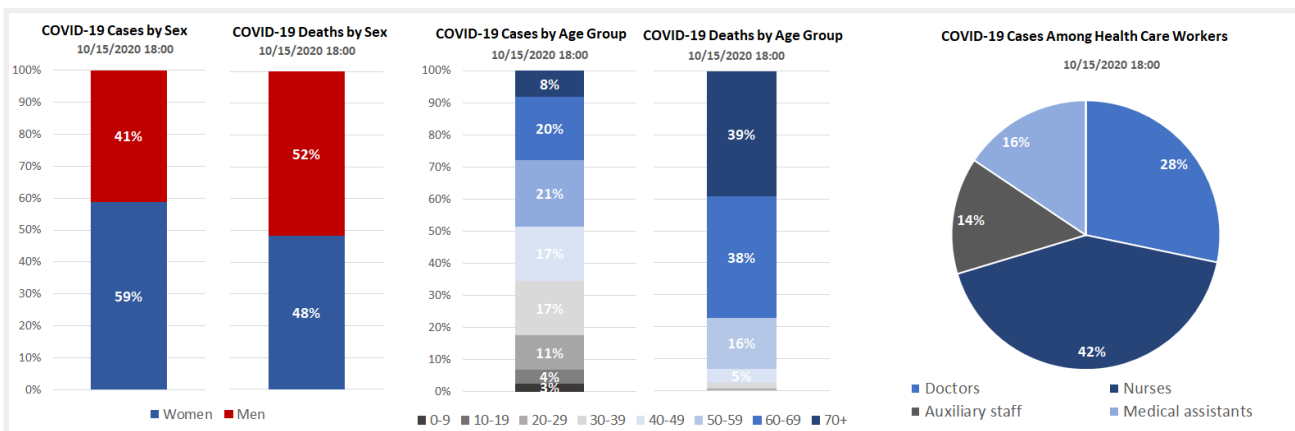


- At the same time, the weekly number of deaths increased to 95 last week, which is 16 more than the previous week or a 20.3% increase. The number of serious cases also increased to 773 during the same period, which is over 100 cases more compared to the week prior. The number of serious cases continued to increase further this week, reaching 797 in the last seven days;
- The share of health care workers in the total number of cases remained around 11%. Over 7,000 doctors, nurses, medical assistants and other staff from the health care sector have been infected with the virus since the beginning of the outbreak;
- In terms of geographical distribution, Chisinau, with 44% of all confirmed cases, remains the most affected area if the number of cases is considered. Similar to last week, Transnistria region, Balti, ATU Gagauzia and Ialoveni follow in the list of most affected areas, accounting for 3-8% of all cases each. All other areas have 2% or less of the total number of cases each. If the size of the population is considered, with over 4,000 cases per 100,000, Chisinau remains the most affected area in the country. The capital city is followed by Balti, Ialoveni, Edinet, Basarabeasca and Taraclia, which have surpassed the 2,000-cases mark per 100,000, and ATU Gagauzia, Straseni, Anenii Noi and Soroca, which have surpassed the 1,500-case mark per 100,000;
- The contagion rate is also uneven across the country, with certain districts registering considerably higher rates than others. Soroca, Glodeni, Donduseni and Ocnita, for example, have some of the highest contagion rates in the country, which range between 1.3 and 1.6. The contagion rate in Chisinau is 1.0;
- More women continue to be infected with the virus than men, 59% vs. 41%. However, the percentage of men who have died from the disease is slightly higher than that of women, 52% vs. 48%. Furthermore, the case fatality rate among men continues to be higher than among women, 2.9% vs. 1.9%;
- Real time figures and graphs can be accessed [here](#) in Romanian and in Russian [here](#). This site has nearly 2.1 million views to date.





Source: Our World in Data, <https://ourworldindata.org> \*Some differences may exist between the data included in the charts above and the data mentioned in the rest of this section because of the difference in the population number used in the calculations.



---

## Overview & Announcements

---

- **Covid-19 Social and Economic Response and Recovery Plan**

The UN shared an overview of the [Social and Economic Response and Recovery Plan](#) and the programme portfolio with the Prime Minister at a UN / Government joint steering committee meeting on October 12. The plan is available in English and Romanian.

- **Fiscal policy 2021 proposed for public consultations**

The MoF developed and proposed for public consultations the [Fiscal policy for 2021](#), which contains several changes i.e.: (i) review of the personal income tax (PIT) exemptions and additional exemption of 5% , i.e. from 24,000 MDL to 25,200 MDL and from 18,000 MDL to 18,900 MDL respectively; increase in the PIT exemption for the sustained persons from 3,000 MDL to 4,500 MDL and abolishment for exemption for s spouse in the amount of 11,280 MDL; (ii) elimination of income tax for payment of dividends (iii) revision of VAT in agriculture (iv) maintenance of VAT reimbursement program for agricultural producers affected by natural disasters (v) establishment of excise taxes for tobacco, alcohol and petrol for a 3-year period (vi) inclusion of road tax in the cost of petrol products (vii) implementation of subsidy mechanism for collection and recycling of packaging.

- **Epi situation in education system**

The latest data from the Ministry of Education on the evolution of the epidemiological situation in educational institutions show that the number of students tested positive with COVID-19 is 284, and 7186 students were placed in self-isolation. 373 teachers were positively confirmed with the new Coronavirus. Of the non-teaching and auxiliary staff, 72 people were infected with the new virus, and another 77 are in self-isolation.

- **A new shadow report on EU- Moldova Association Agreement progress released**

IPRE NGO released a [new shadow report](#) assessing the progress of the implementation of the EU-Moldova Association Agreement after 6 years since it was signed. The main conclusion is the areas conditioned with budget support from the EU have registered progress in reforms, while no tangible progress was attained in the implementation of the values part of the Agreement.

- **New Study on the socio-economic impact of COVID-19 on households**

The UNDP jointly with the World Bank and the National Bureau for Statistics conducted a study on the socio-economic impact of Covid-19 on households. The study identified that 38.7% of the respondents experienced stress and depression and anxiety, 75% were affected by introduction of restrictions for travel. Noteworthy that 15% of households reported that at least one migrant member returned being affected by the pandemic, while the same share of respondents informed that their household members could not come back to Moldova, while 3% of labour migrants working abroad lost their jobs. The study found that disposable income of those households whose member(s) lost their jobs is substantially less (by 37.4%) than those who kept their job unaffected by Covid-19, which decreased their consumption on average by 17.5%. Another important outcome of the study identified a substantial share of those who in the context of Covid-19 experienced impaired access to healthcare, while at the same time a large share of respondents stated that their health condition did not require health care services. However, 16% of respondent households mentioned that they are not financially challenged by Covid-19 crisis, while out of those interviewed cca 19.9% suggested that they

had to save on food, while 19.5% relied on their past savings, 4.6% reported delaying payment for utilities, while 3.6% requested loans to cover their costs of living. Further details can be found on [this link to NBS site](#).

- **The October IMF Economic Outlook released**

The [IMF report for October on the World Economic Outlook](#) was released. The main feature of the Report is the impact of COVID-19 on the world economy. For Moldova, the IMF forecasts a decrease of the GDP by 4.5% in 2020, while it expects a modest growth in 2021 to 4.1% and by 2025 to stabilize at 4.2% annual GDP growth.

## Update on Restrictions\*

**\*these are subject to changes and amendment and should be viewed as an overview and not as a definitive source for decision making**

- A new Decision - [No. 34 from 13 October](#), was issued by the National Extraordinary Commission for Public Health. The decision among others, declares emergency situation in public health in most of the rayons as being marked with Red Code (only three out of 38 territorial units are in yellow, none in green);
- The Decision also sets out several rules on organization of the Elections Day and access of voters to the voting premises. The voters will be screened and filtered upon body temperature and signs of infection and wearing a mask. All voters that cannot not come to polling stations, including those in self-isolation, can request home voting to their respective territorial electoral section;
- By a separate decision, from October 12, the authorities instituted obligatory wearing of masks for students during all the time while in institution's premises, i.e. lectures, breaks, etc.;
- On October 12, the [List of States with increased risk of transmission of COVID-19](#) was updated by the National Extraordinary Commission for Public Health. The incoming passengers into Moldova from the listed countries need to observe the self-isolation regime of 14 days.